

## Logo RS 24S

D348



E575



E960



R996

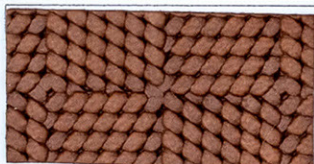


## Logo TR 24T

D348



E575



E960



R996



## Logo FL 24P

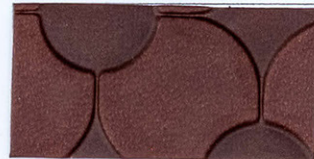
D348



E575



E960



R996



## Logo PT 24Z

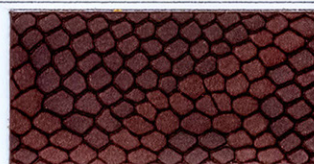
D348



E575



E960



R996



### ▲ ATTENZIONE/WARNING ▲

**ARTICOLI GOFRATI A PIASTRA**  
Si intravede una barratura trasversale  
ogni metro circa.

**ARTICLES EMBOSSED BY PLATE**  
There is a junction line each meter.

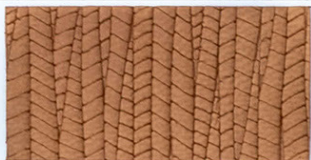


Solo sul retro  
Only on the back

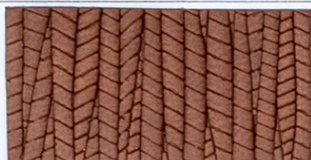
Articolo/Article	Composizione/Composition	Peso/Weight	Altezza/Width
Logo Embossed	Support: 30% (70% PA - 30% VI) Resins: 70% PU	gr/m <sup>2</sup> 510 ± 5%	cm 140

## Logo PA 24Y

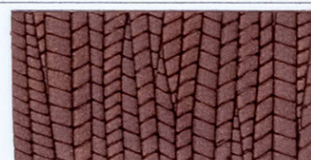
D348



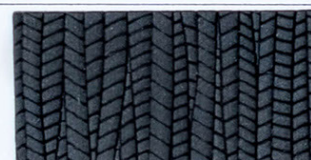
E575



E960

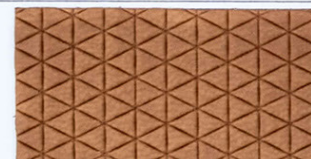


R996



## Logo TL 24H

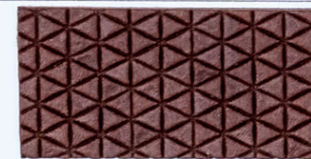
D348



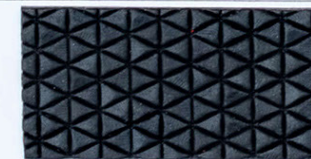
E575



E960

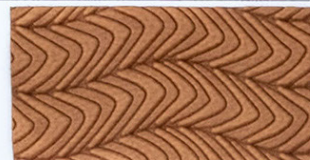


R996

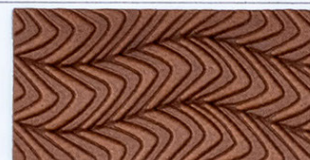


## Logo ON 24V

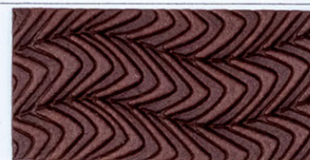
D348



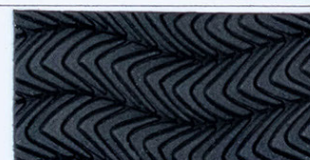
E575



E960

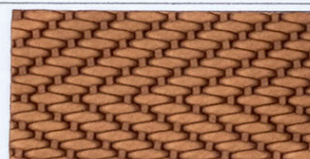


R996



## Logo ST 24U

D348



E575



E960



R996



### ▲ ATTENZIONE/WARNING ▲

**ARTICOLI GOFFRATI A PIASTRA**  
Si intravede una barratura trasversale  
ogni metro circa.

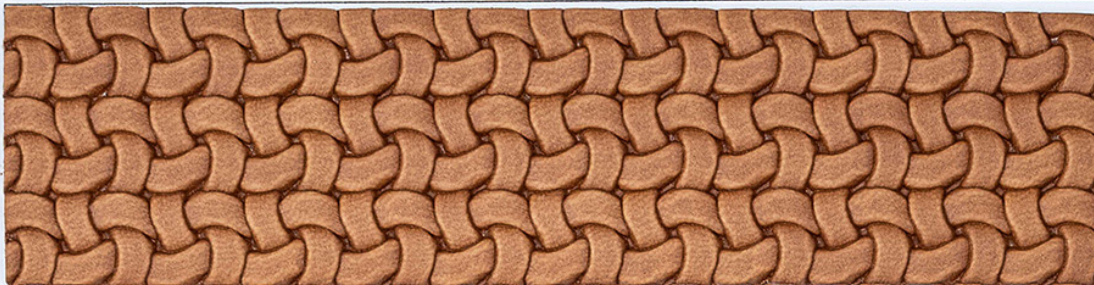
**ARTICLES EMBOSSED BY PLATE**  
There is a junction line each meter.



Solo sul retro  
Only on the back

Articolo/Article	Composizione/Composition	Peso/Weight	Altezza/Width
Logo Embossed	Support: 30% (70% PA - 30% VI) Resins: 70% PU	gr/m <sup>2</sup> 510 ± 5%	cm 140

D348



D660



E575



E960



R996



**▲ ATTENZIONE/WARNING ▲**

**ARTICOLO GOFFRATO A PIASTRA**

Si intravede una barratura trasversale ogni metro circa.  
L'altezza è di cm 135

**ARTICLE EMBOSSED BY PLATE**

There is a junction line each meter.  
Width is cm 135

Articolo/Article	Composizione/Composition	Peso/Weight	Altezza/Width
Logo Trissè 22J	Support: 30% (70% PA - 30% VI) Resins: 70% PU	gr/m <sup>2</sup> 510 ± 5%	cm 135