

# Vegan leather | *Dalia*

Polyurethane base

KF 4070

A vegan leather with a classic, mid-tone and suede finish.

## Features

### COMPOSITION

*Fabric:*

- ◆ 70% of polyurethane
- ◆ 30% of polyester

*Backing:*

- ◆ Polyester and cotton microfiber

### THICKNESS

- ◆ 0.75 mm (± 0.1 mm)

### WEIGHT

- ◆ 410 g/m<sup>2</sup>

### TEXTURE

- ◆ Suede, with a halftone look

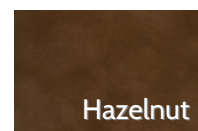
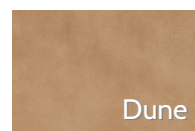
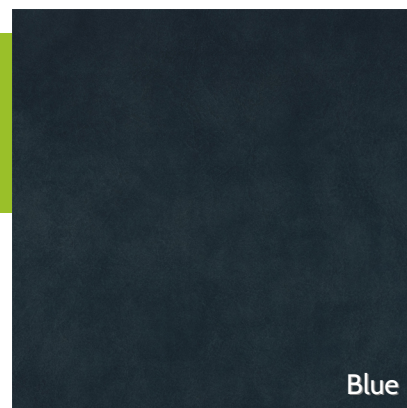
## Tests

### FLEXION

- ◆ 100,000 cycles without damage

### ABRASION (*MARTINDALE*)

- ◆ 51,200 cycles without damage



## Colors

- ◆ Dune
- ◆ Hazelnut
- ◆ Blue

## Certification

- ◆ **ISO 14001 Standard**  
ISO 14001 defines the criteria and a management framework for implementing an effective environmental management system in companies